

6-2018

A Woman's Gaze

Emily Fiore

Follow this and additional works at: <https://digitalworks.union.edu/theses>



Part of the [Fine Arts Commons](#), [Painting Commons](#), and the [Women's Studies Commons](#)

Recommended Citation

Fiore, Emily, "A Woman's Gaze" (2018). *Honors Theses*. 1629.
<https://digitalworks.union.edu/theses/1629>

This Open Access is brought to you for free and open access by the Student Work at Union | Digital Works. It has been accepted for inclusion in Honors Theses by an authorized administrator of Union | Digital Works. For more information, please contact digitalworks@union.edu.

Emily Fiore








All images © 2018 Emily Fiore.
All rights reserved. No part of the contents
of this book may be reproduced without the
written permission of the copyright holder.

A Woman's Gaze

Emily Fiore

Crowell and West Galleries
Feigenbaum Center for Visual Arts
807 Union St
Schenectady, NY 12308





My work merges my passion of thinking politically and artistically. This series, *A Woman's Gaze*, is an extension of my Political Science thesis, where I focused on artists who combat the male gaze by representing women's lives realistically, from a woman's perspective. These paintings focus on intimate scenarios from women's lives where the male gaze is absent. The large scale imagery brings visibility to these otherwise private moments.

I was influenced by contemporary artists including Jenny Saville, Ellen Altfest, and Kara Walker. These artists incorporate a level of abstractionism and distortion into their work which inspired me to shift to fast-paced, large paintings. I was able to move around the canvas rapidly, taking me out of my comfort zone. I used quick studies to practice this fast style. The result is these tightly framed, intentionally ambiguous images. It is up to the viewer's experiences to determine what they take away from these personal scenes.

It's Ok, She Plays Rugby, 2018, oil on canvas, 42 x 44 in



Walking Home, 2018, oil on canvas, 42 x 44 in



Drained, 2018, oil on canvas, 42 x 44 in





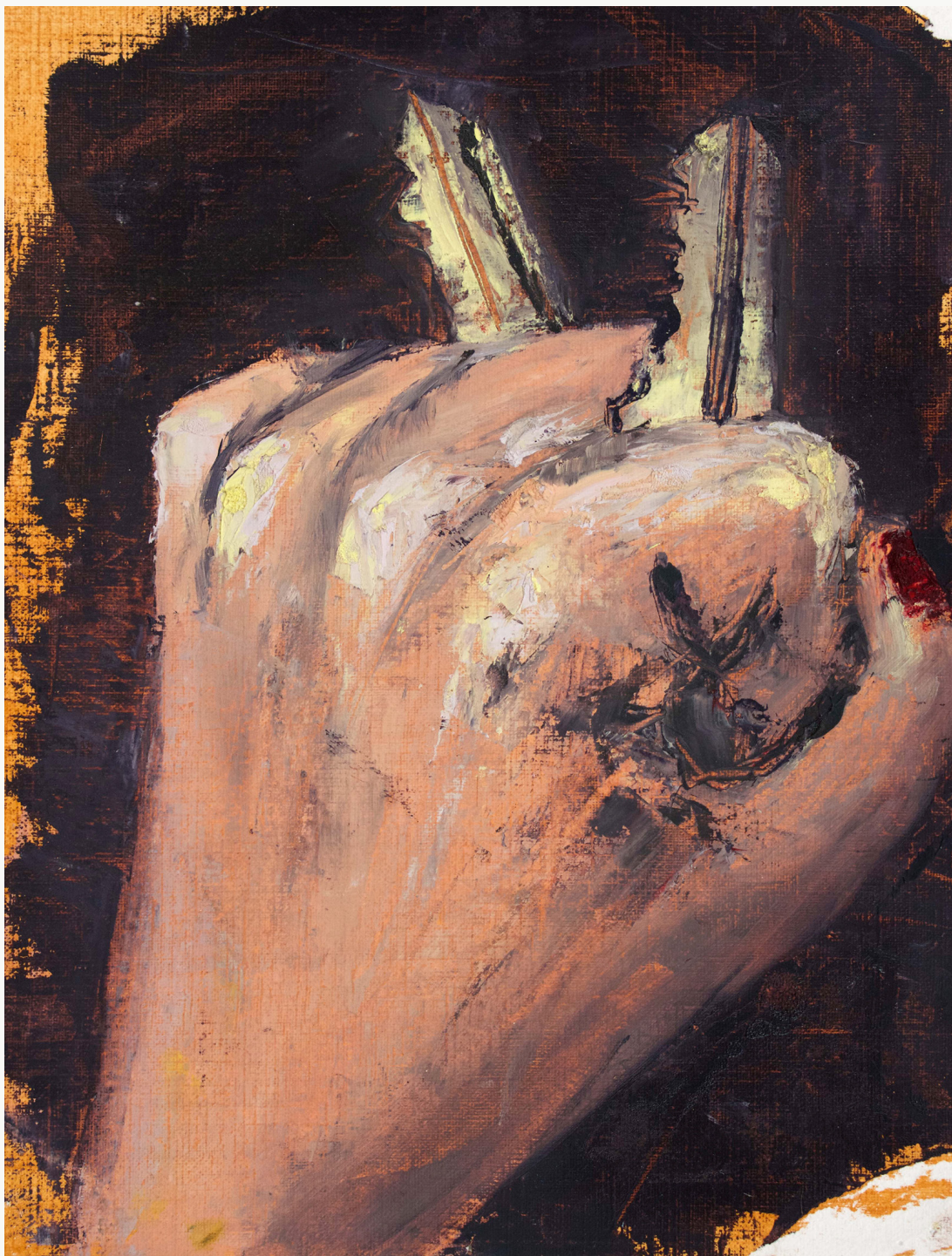


Hand Study, 9 x 9 in



Hand Study, 9 x 12 in

Hand Study, 9 x 12 in



Eye Study, 9 x 9 in





Eye Study, 6 x 5 in




Mirror Study, 8 x 11 in

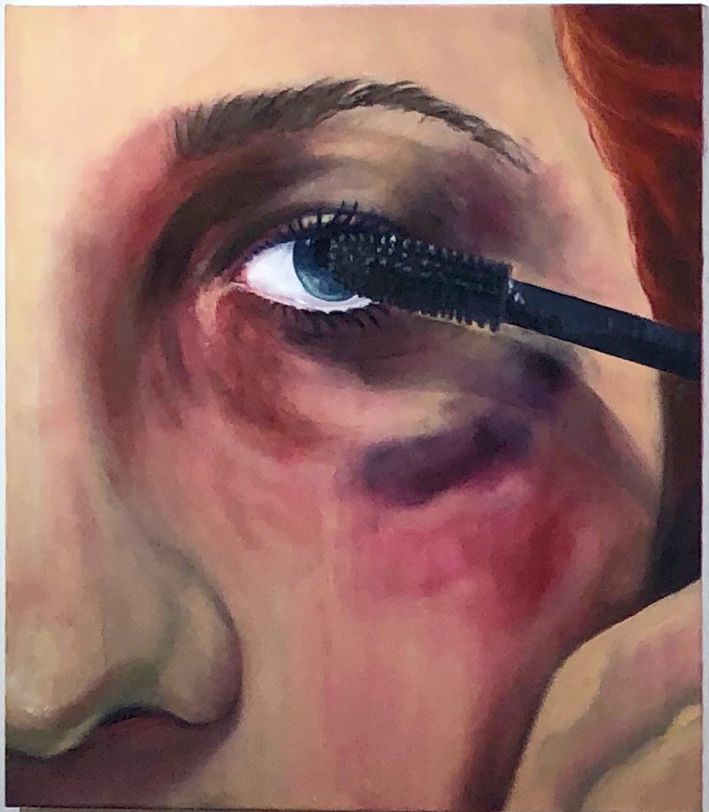


Hand Study, 10 x 4 in





Thank you to the students and the faculty of the Union College Visual Arts Department. Special thanks to my advisors Professor Laini Nemett and Professor Lori Marso for all of your help and support this year. Thank you to Professor Sandy Wimer and Professor Cigdem Cidam for your input and encouragement. My friends, family, Mom and Dad, and the Women's Rugby Team for keeping me sane.



11.11.11
11.11.11
11.11.11





1111

